

NORTHWICH Local Policing Unit

WEAVER and CUDDINGTON Beat Team

January-March 2025



Welcome to our newsletter. The content within this newsletter has been provided to keep you up to date with local policing activities in your area and to give you advice and guidance on how to contact us and find out about upcoming projects or events we are participating in.

Upcoming Events

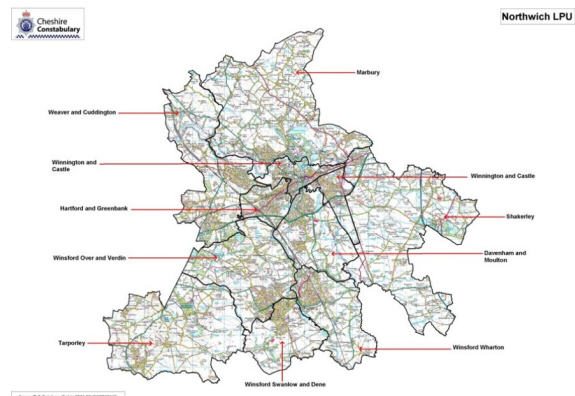
Joint Crime & ASB Street surgery between POLICE, **Aphra Brandreth MP** and CWAC Cllrs outside WEAVERHAM shops on 2nd May from 1030-1130 hours

Weaverham funfair, Lakehouse field 6th-18th May

Meet the team



Weaver and Cuddington Police
@WeaverCuddPol



PC Daniel GRIMSHAW 30091

PCSO Michelle GILLET 20488

Sgt Rogan OGDEN 30052



Police surgery - upcoming

THE LIGHTHOUSE, ST MARY'S CHURCH HALL, CHURCH LANE,
NORTHWICH, CHESHIRE, CW83NJ

WEAVERHAM,

Tuesday 1st April 1800-1900 hours

Tuesday 22nd April 1800-1900 hours

Tuesday 6th May 1300-1400 hours

Thursday 22nd May 1800-1900 hours

Monday 2nd June 1800-1900 hours

Tuesday 17th June 1300-1400 hours

CUDDINGTON & SANDIWAY VILLAGE HALL, 93 NORLEY ROAD, CUDDINGTON, NORTH-
WICH, CHESHIRE, CW82LA

Thursday 10th April 1800-1900 hours

Mon 28th April 1300-1400 hours

Tuesday 13th May 1800-1900 hours

Tuesday 27th May 1300-1400 hours

Thursday 12th June 1800-1900 hours

Tuesday 24th June 1800-1900 hours



You Said Residents Voice

Have your say on policing in your area....

It is important to us that we know about the issues that cause you concern. We have set up a survey where you can tell us about the things you would like to focus on in your area. If you can't scan the code you can go to

[Resident's voice | Cheshire Constabulary](#)

Call us on 101 and let us know about things that are happening in your area. Our call handlers will

Make sure the information gets to the right person.

Send us a form online —go to: www.cheshire.police.uk and fill in an online reporting form.

15 x resident voice surveys received from January—March thank you!

Our aim throughout April's month is to address all your community concerns raised.

SPEED – Northwich Road, Weaverham Village, Norley Road

PARKING— Church Street junction, Leigh Way, Walnut Avenue

DRUGS – Green Park, Lime Avenue, East Lane

ASB – N/A

VISIBILITY – Long Acre

NO CONCERNS – Long Acre

OTHER – Long Acre dog fouling, Weaverham Village speeding ASB motorbike, Cuddington fox hunt, badger bait concerns, Norley Road—pot holes

Weaverham residents raised concerns with CWAC regulatory services regarding the rubbish on the public walkway off HOLLY ROAD. This has been addressed to WEAVERHAM PARISH COUNCIL clerk to arrange a community litter pick in location.



You said, We Listened, We Did.....

WEAVER and CUDDINGTON

You Said: SPEEDING around ACTON BRIDGE and CHESTER ROAD, CUDDINGTON was a concern.

We Did: Speed enforcement conducted, Offences captured processed for central ticket office to progress further.

You Said: PARKING was a concern on MILTON ROUGH.

We Did: PARKING patrol was conducted to provide reassurance to the community.



News From Your Local Area



Join Our Neighbourhood Watch Scheme – Help Keep Our Community Safe!

We're inviting residents to be part of our local Neighbourhood Watch Scheme – a simple but powerful way to look out for each other and help reduce crime in our area.

By joining, you'll:

- Stay informed with regular updates from Cheshire Police
- Receive tips on home and personal safety
- Help create a stronger, more connected community

Whether you have 10 minutes a week or just want to stay in the loop, every little helps.

Find out more and sign up here:

<https://www.cheshire.police.uk/advice/advice-and-information/wsi/watch-schemes-initiatives/neighbourhood-watch/>

Let's work together to keep our neighbourhood safe!

Community Speedwatch

If you are interested in volunteering as a community speed watch volunteer helping to keep our roads a safer place please message us. Volunteers once trained will be required to work independently as a minimum group of 3 persons at a time. For more info - [Community Speed Management | Cheshire West and Chester Council](#)

If you have any time spare to volunteer regularly helping to keep our roads safe within our communities please contact your PCSO—
michelle.gillett@cheshire.police.uk



News From Your Local Area



ASB

WEAVERHAM – 1 incident(s) - Reporting a large group of youths outside the WEAVERHAM LIBRARY and concerns of a strong smell of cannabis. Officers attended, all in order.

BURG—dwelling

CRIMINAL DAMAGE

WEAVERHAM – 1 incident (s) - unknown person thrown unknown substance over stationary unattended vehicle parked up a private driveway on NORTHWICH ROAD. CCTV enquiries made, negative.

SUSPICIOUS ACTIVITY

CUDDINGTON – 2 incident (s)

Report of unknown male looking at vehicles, when confronted male claimed to be reading the water metre before making off on foot. No further reports received.

Suspicious male seen knocking on pensioners properties on FOREST CLOSE. No further reports received.

DUTTON – 1 incident (s)

Unknown male knocking on doors on WARRINGTON ROAD making enquiries regarding buying land. No further reports received.

WEAVERHAM – 1 incident (s)

Report on SANDY LANE of unknown male knocking asking reporting persons questions regarding their heating boiler. No other reports received.

FRAUD

WEAVERHAM – 1 incident (s)

Referral made by Action Fraud for Op Signature protocol to be completed with a victim of scam on facebook. Victim believed a Martin Lewis link was genuine sending funds for bitcoins.

THEFT

ACTON BRIDGE – 1 incident (s)

Theft of used oil from Public house

CUDDINGTON – 2 incident (s)

Theft of parcel from doorstep on ST JAMES COURT. CCTV enquiries to be made by officer in the case. Ongoing.

Theft of fallen trees on WASTE LANE by male on quad bike.

DUTTON – 1 incident (s)

Theft of metal boiler tank from gated property on NORTHWICH ROAD. CCTV available.

WEAVERHAM – 1 incident (s)

Theft of pushbike excluding wheel which was secured in a garden on HIGH STREET. No CCTV available.

News From Your Local Area



Schools

Fun time engaging with the young people at CUDDINGTON YOUTH CLUB. Discussions held with youth workers to organise a bike marking event in the summer months.

Exciting news!! Mini Police is coming to WEAVERHAM ACADEMY PRIMARY SCHOOL funded by WEAVERHAM PARISH YOUTH COMMITTEE and a anonymous member of the public. Year 5/6 pupils have completed an application form passing their mini police interview. The next stage is for pupils to attend their attestation in front of their parents/peers/teachers where they will make their 'mini police promise' after the Easter holidays.

TRUCAM

You said speed was a concern on CHESTER ROAD SANDIWAY

Speed enforcement was conducted with the highest recorded speed captured being 48 mph

Video evidence has been processed for our central ticket office to progress further

PARKING

Parking enforcement and engagement conducted in collaboration with CWAC enforcement officers and WEAVER and CUDDINGTON police beat officers.

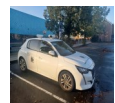
Focus Areas:

- CUDDINGTON primary school, ASH ROAD
- WEAVERHAM high school LIME AVENUE/FOREST STREET

Outcomes:

ASH ROAD:

- 3 drivers engaged in conversations and advised to relocate their vehicles to safer locations.
- 3 advisory notices issued.
- 1 penalty notice issued for parking violations on zig-zag markings.



LIME AVENUE:

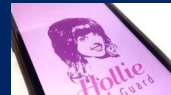
- 3 drivers engaged in conversations and advised to relocate their vehicles to safer locations.

Purpose:

This initiative aimed to promote road safety and reduce hazards caused by inappropriate parking, especially around school zones where children are at risk.

Parking patrols have also been made around MILTON ROUGH in ACTON BRIDGE.





News From Your Local Area

FRAUD warnings



You may have an increase in cold callers offering services such as gardening or home improvements. We want to help keep you safe from bogus callers and doorstep thieves.

Doorstep cold-calling is not illegal, however Trading Standards advice is to NEVER employ traders who call at your door.

The work or service offered can sometimes be unnecessary, overpriced, of a poor standard or not done at all. Sometimes, they have no formal training to carry out the work offered, and some may have links with distraction burglaries.

Protect yourself by:

Keeping your doors locked

1. offenders sometimes work together - one keeps you distracted at the front of the house whilst the other enters via the back door.

if you are not sure who is at your door, don't open it! Speak to unannounced visitors through a window if possible.

Bogus callers invade personal space and intimidate people to gain entry. Do not feel obliged to answer to any unwanted visitors, you can choose not to engage. Don't be drawn in by stories which create panic, some callers might ask you to contact the emergency service as there has been an incident. If this happens assist them with the door closed. Telephone a neighbour or friend to come and check out the visitor before opening the door. Letting an unexpected visitor know that you have support coming to assist will often deter people with malicious intentions. Ask for ID and call the company the visitor claims to be from. i.e. utilities: call a number you already have on your bill or from a directory. If they are a genuine caller, they won't mind you completing these checks. Never ring a number the bogus caller provides! If you're still not sure, ask the visitor to leave and tell them to make a written appointment so you can arrange for someone to be with you for the pre-arranged appointment. Consider joining a Neighbourhood watch scheme in your area www.cheshirenw.org This is a great way to build a sense of community and encourage neighbours to look out for each other. You can arrange with service providers a personal password should they need to make a house call to you i.e. gas, water or electricity. You can find the information on how to set this up on your bill, if not give them a call to arrange this.

If you feel threatened at any time or feel you are in immediate danger, call [999](tel:999). If you suspect a bogus caller has visited you, even if you did not let them in, call the Police on 101, we need to know!

REMEMBER – It is your door and you are in control of how you handle visitors.

We've had a number of courier frauds reported to us recently - courier fraud is typically where a victim is contacted by fraudsters who pretend to be police officers or bank officials, often over the phone or in person. The victims are then told to withdraw or hand over cash or valuable items, to purchase gift cards, currency or provide access to bank accounts to aid in an investigation. Police officers would NEVER ask anyone for money or to hand over valuable items – as a result of a fraud 'they are investigating' to help with 'an ongoing investigation', or any other reason.

For information about the signs to look out for or how to report fraud offences, please visit <https://www.cheshire.police.uk/advice/advice-and-information/fa/fraud/personal-fraud/door-to-door-courier-fraud/> and share this advice with any vulnerable friends, relatives and neighbours.



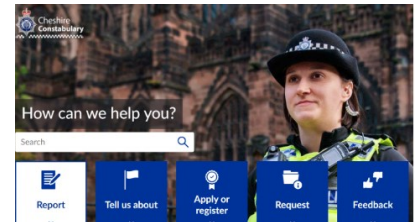
How to keep up to date with policing stories in your area..

CONTACT

Please remember that sending social media message or ringing your beat officers on their work mobiles is not the correct format of reporting incidents. Our accounts/mobiles are not monitored 24/7.

If you need to get in touch with us? There are a number of ways you can contact us, find the best way that suits you to make your experience as quick and convenient as possible.

ring 999 in an emergency
ring 101 when it's less urgent than 999
cheshire.police.uk report non-urgent incidents online



To stay up to date with local policing news in your area you can sign up or follow one or all of the below

Keeping you informed on what's going on in your community

[Home Page - Cheshire Police Alert](#)



Home Watch

If any members of Cheshire alert would like to set-up and become a coordinator of a watch scheme then we, as the police, will offer support and advice in any way we can. Crewe e-mail is attached at the top of this newsletter

Alternatively follow this link - <https://www.ourwatch.org.uk/>

Residents Voice

Have your say on policing in your area.....

It is important to us that we know about the issues that cause you concern. We have set up a survey where you can tell us about the things you would like to focus on in your area.

If you can't scan the code you can go to

[Resident's voice | Cheshire Constabulary](#)

