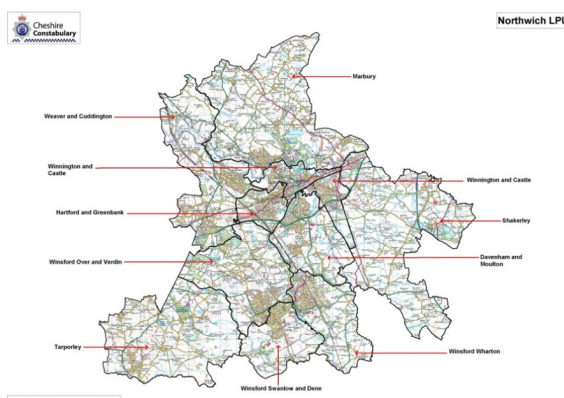


# NOVEMBER 2023



## Upcoming Events

Christmas children awards at  
NORTHWICH POLICE STATION—  
invitation only 16th/17th DECEMBER



## Meet the team

*Sgt John HANCOCK 5697*



## Police surgery - upcoming meetings

**Please check Social Media for surgery dates for your community area**

Weaver and Cuddington Police @WeaverCuddPol

**CALL THE  
POLICE  
ON**



**IN AN EMERGENCY  
ALWAYS CALL 999**

# You Said ..... Residents Voice

## Have your say on policing in your area....

It is important to us that we know about the issues that cause you concern. We have set up a survey where you can tell us about the things you would like to focus on in your area. If you can't scan the code you can go to

[Resident's voice | Cheshire Constabulary](#)

**Call us on 101** and let us know about things that are happening in your area. Our call handlers will

Make sure the information gets to the right person.

**Send us a form online** —go to: [www.cheshire.police.uk](http://www.cheshire.police.uk) and fill in an online reporting form.

48 x resident voice surveys received throughout NOVEMBER thank you! Our aim throughout December's month is to address all your community concerns raised.

**SPEED** – WITHERS LANE, WILLOW GREEN, WARRINGTON ROAD, 2 X WALNUT AVENUE, ST JOHNS WAY, NORTHWICH ROAD, 2 X NORLEY ROAD, CHESTER ROAD, LIME AVENUE, WEAVERHAM ROAD

**PARKING** – WILLOW GREEN, WALNUT AVENUE, NORLEY ROAD, 3 X FOREST STREET, 2 X GREEN PARK, BEECH HEYES DRIVE, CHURCH STREET, BLANK LOCATION

**DRUGS** – 3 X WALNUT AVENUE, RUSSET ROAD PARK, 2 X LIME AVENUE SHOPS

**ASB** – WALLERSCOTE ROAD, LIME AVENUE

**VISIBILITY** – WALNUT AVENUE, THE CORNERS, NORTHWICH ROAD, LIME AVENUE

**NO CONCERNS** – WILLOW GREEN, WALNUT AVENUE, 2 X THE CORNERS, LIME AVENUE, 3 X ELM ROAD

**OTHER** – WELL LANE-CUT THROUGH SCHOOL RUN, THE CRESCENT-DOG FOULING, MILTON ROUGH-PRIORITISE CHILDRENS SAFETY, SMITHY LANE-FOCUS ON CRIME NOT SOCIAL MEDIA



# You said, We Listened, We Did.....

## **ACTON BRIDGE**

Speed enforcement has been conducted on STATION ROAD ACTON BRIDGE, the highest recorded speed being 40 mph in a 30 mph zone. Video evidence has been processed for our central ticket office to progress further.

# You said, We Listened, We Did.....

## CUDDINGTON

Resident voice surveys have been completed this week around LIME AVENUE shops discussing community issues/concerns.

Speed enforcement has been conducted on WEAVERHAM ROAD, CUDDINGTON. 10 offences captured the highest being 49 mph [The Fatal Five | Cheshire Constabulary](#)

Reassurance visit made to SANDIWAY LIBRARY this week, and all was well

SANDIWAY LIBRARY are to hold a citizen advice bureau on 1<sup>st</sup> December from 11-1230 pm. FREE event with refreshments provided for all. Come along to chat about ways to save money on utility bills, find out about support schemes and how to stay warm this winter.

Patrol made around CUDDINGTON with our ward celebrity cat HARRY who was waiting on the window ledge for his supper outside CHATWINS.

WEAVER and CUDDINGTON beat team attended CUDDINGTON PARISH COUNCIL meeting to discuss community issues/concerns and how we can help. If you have any community issues or concerns that we can assist with, please tell us [Resident's voice | Cheshire Constabulary](#)

Thank you to CUDDINGTON PARISH COUNCIL clerk and Cllr Gillian EDWARDS for the invitation to the official opening of SANDIWAY PRIMARY SCHOOL pedestrian walk route. Speed concerns raised by CUDDINGTON parish council on behalf of local residents has been address this week.

Speed enforcement has been conducted on CHESTER ROAD, the highest recorded speed captured being 42 mph.



# You said, We Listened, We Did .....

## DUTTON

No demand

## WEAVERHAM

You said, we listened, we did ..... speed enforcement has been conducted on WEAVERHAM ROAD this week. 2 offences captured, the highest speed being 37 mph.

Speed enforcement has been conducted on WALLERSCOTE ROAD this week, the highest recorded speed being 34 MPH. For a safer community please adhere to the speed limit in place.

[The Fatal Five | Cheshire Constabulary](#)

Resident voice surveys have been completed this week around LIME AVENUE shops discussing community issues/concerns.

School parking patrol has been conducted this afternoon around ST BEDES PRIMARY SCHOOL WEAVERHAM with several motorists relocating their vehicles to safer locations, thank you!

ST BEDES PRIMARY SCHOOL are 100% committed to ensure safer roads for both children and local residents and are to address parking/children safety within their school newsletter, liaise with parents, local residents, and their beat team to achieve. WEAVER and CUDDINGTON beat team have linked in with CWAC highways to source a possible parking solution opposite junctions, churning up the grass verges. Further patrols will also be made to KEEPERS LANE and BEECH HEYES DRIVE.

Resident voice surveys have been conducted around our ward discussing community issues and concerns with residents on WILLOW GREEN, ELM ROAD, LIME AVENUE SHOPS LOCATION and WALNUT AVENUE. Working with WVHT housing officer around WALNUT AVENUE to discuss tenancy issues or concerns.

WEAVERHAM LIME AVENUE Christmas lights switch on was a lovely community event with our very own PC PANDA switching the lights. Lots of WEAVERHAM residents came out to watch. Thank you to ST MARYS CHURCH and local primary school children from ST BEDES, FOREST STREET and WEAVERHAM ACADEMDY for making it a special community event.



# News From Your Local Area

## **Community Speedwatch**

WEAVER and CUDDINGTON beat team have attended the in-house CSW 'TRAIN THE TRAINER' session at HQ . If you are interested in volunteering as a community speed watch volunteer helping to keep our roads a safer place please message us. Volunteers once trained will be required to work independently as a minimum group of 3 persons at a time. For more info - [Community Speed Management | Cheshire West and Chester Council](#)



WEAVER and CUDDINGTON beat team have meet with CHESHIRE POLICE traffic management officer to discuss our ward CSW schemes.

Currently we have—

1 volunteer for CUDDINGTON  
2 volunteers for CTON BRIDGE  
0 volunteers for WEAVERHAM

If you have any time spare to volunteer regularly helping to keep our roads safe within our communities please contact your PCSO—[michelle.gillett@cheshire.police.uk](mailto:michelle.gillett@cheshire.police.uk)

## **ASB**

CUDDINGTON—1 incident(s)

## **BURG**

WEAVERHAM—1 incident(s)

Theft of hair clippers, scissors and cash from barbers. Access gained via secure locked door. CCTV enquiries made, CSI attended, ongoing enquiries.





# News From Your Local Area

## **CRIMINAL DAMAGE**

### **CUDDINGTON – 1 incident (s)**

Rear window to unattended stationary vehicle smashed by unknown means/person. CCTV enquiries made, negative.



## **FRAUD**

### **CUDDINGTON – 1 incident(s)**

Referral made to WEAVER and CUDDINGTON police from ACTION FRAUD. OP SIGNATURE to be completed with member of our community following a AMAZON SECURITY SCAM where the caller claimed to update software on victims computer gaining access to personal bank details. To report a fraud or for more information – [Reporting fraud and cyber crime | Action Fraud](#)

## **SUSPICIOUS ACTIVITY**

### **WEAVERHAM – 2 incident (s)**

Unknown male attends residential property to make enquiries about caravan on drive, if it was for sale? No other reports made.

Late evening, unknown male tries door to an unattended stationary vehicle before making off on foot in a unknown direction. Patrols deployed, no trace.

## **THEFT**

### **WEAVERHAM – 4 incident(s)**

Theft of 10 x radiators from garden by unknown persons. CCTV enquiries made negative.

Theft of deckchairs from resident garden by unknown persons. No further lines of enquiries.

Repeat victim of theft from residential garden. Electrical wire taken, no further lines of enquiries.

Report of £150 theft of steak from store. CCTV available.



# News From Your Local Area



## Schools

WEAVER and CUDDINGTON beat team attended DANIELLE ASHLEY social activity group to discuss HATE crime with service users. During the session the group discussed the perception of a HATE crime, who can be affected and what HATE crime looks like including the different characteristics of the Equality Act 2010. To report a HATE crime –

[Report a hate crime - True Vision \(report-it.org.uk\)](http://report-it.org.uk)

Ring 101

Attend 3<sup>RD</sup> PARTY REPORTING CENTRE at SANDIWAY LIBRARY.

Lovely to see some many REMEMBRANCE DAY activities, poppies at DANIELLE ASHLEY activity group

Exciting news!! Mini Police is coming to WEAVERHAM ACADEMDY PRIMARY SCHOOL funded by WEAVERHAM PARISH YOUTH COMMITTEE and a anonymous member of the public. Year 5/6 pupils have been invited to complete an application form in preparation for an mini police interview. Once accepted, the pupils will receive a letter of congratulations, have a uniform fitting session and attend their attestation in front of their parents/peers/teachers where they will make their 'mini police promise'. Invitations have started to be issued to children within our ward for their good community work, positive attitude, caring for others.

Both SANDIWAY and WEAVERHAM ACADEMDY PRIMARY SCHOOLS pupils have received nomination and invitations have been hand delivered by your PCSO.

WEAVER and CUDDINGTON beat team have worked in partnership with DVSA drivers & vehicles standard agency and CWAC monitoring officer outside WEAVERHAM HIGH SCHOOL. The aim of the operation was to conduct vehicle/driver checks on school bus transport. Mechanical vehicle checks, seating checks, emergency window checks, tyre tread, operator licence checks, TACO. Pleased to report all drivers were allowed to continue on their way after the road side checks were complete.

WEAVERHAM ACADEMDY reception class were visited this morning to discuss roles of the police. After the classroom discussion, children tried on old police uniform and sitting in the PCSO vehicle.



# News From Your Local Area

Cheshire Constabulary has teamed up with The Hollie Gazzard Trust to provide people across the county with an enhanced level of protection – in a bid to make Cheshire's streets even safer.



The partnership sees the Constabulary encouraging members of the public to download a next generation safety app called Hollie Guard, which turns your smartphone into an advanced personal safety device.

And in a further drive to help protect Cheshire's women and girls from violence, funding has been allocated for the enhanced version, Hollie Guard Extra, so that thousands of people across the county that police and partners identify as potentially vulnerable are given access to a professional, police-approved monitoring team (via a control centre) who respond if they are in danger.

The investment forms part of the wider Safer Streets initiative where the Police and Crime Commissioner for Cheshire, John Dwyer, secured £1.5 million of funding from the Home Office to roll out several innovative projects across Cheshire - including the partnership with The Hollie Gazzard Trust - to help keep people safe.

The Trust was set up by the parents and sister of Hollie Gazzard who was murdered by an ex-partner in 2014 at her place of work in Gloucester.

For more information see link attached

[Cheshire Constabulary and The Hollie Gazzard Trust working together to keep people safe across Cheshire | Cheshire Constabulary](#)

To download the app – click on this link [Hollie Guard – Personal Safety App](#)

## **Events**

NORTHWICH LPU beat team PCSO's together with WVHT housing officer conducted a knife sweep around ST HELENS CHURCH and VICKERSWAY PARK as part of OP SCEPTRE initiative campaign helping to make CHESHIRE KNIFE CRIME free. One knife was found and safely disposed of in our surrender bin. If you have any unwanted knives please contact your PCSO to dispose of safely.

Christmas children awards at NORTHWICH POLICE STATION—invitation only

SANDIWAY LIBRARY citizen advice bureau session on HOW TO SAFE WARM/SAVE MONEY on 1<sup>st</sup> December from 11-1230 pm





# News From Your Local Area

## **FPN Tickets Issued**

0 x ticket issued.

## **FRAUD— advise**

Gold is often targeted by criminals.

You should refrain from keeping high value items in your own home, instead use a bank safety deposit box.

If you do have items at home, they should be kept in a safe that is secured to the brickwork or anchored to the ground. If you can move it easily – then the burglar can too! For guidance visit - <https://www.securedbydesign.com/guidance/crime-prevention-advice/home-security/home-safes> Photograph each item, keep a written description, and make sure it is included on your insurance policy.

Use special property marking technology from [www.securedbydesign.com](http://www.securedbydesign.com)  
Keep fences/hedges at front of property low – give them nowhere to hide.

Keep your gardens well lit – install dusk till dawn lighting at front and rear of property.

CCTV/video doorbells with clear signage can be a deterrent.

Alarms – consider an accredited burglar alarm

The two inspectorate bodies are the NSI (National Security Inspectorate – [www.nsi.org.uk](http://www.nsi.org.uk)) and the SSAIB (Security Systems & Alarm Inspection Board – [www.ssaib.org](http://www.ssaib.org)). Both inspectorates have search functions on their websites to assist in checking out if a security company installing alarms is genuinely approved. It will ensure you have a reliable and well-maintained system that meets relevant British and European standards, and which could result in lower insurance premiums.

Keyless car theft – what is it? Cars with keyless entry unlock automatically when the key comes within a short distance of the car. Keyless car theft, also known as 'relay theft', occurs when a device is used to fool the car into thinking the key is close by; this unlocks the car and allowed the ignition to be started. Thieves only need to be within a few metres of your car key to capture the signal and can take just 20 to 30 seconds. If you must push a button on your car key to access your car, you don't have keyless entry – but please still be aware and look out for your neighbours!

How to protect your car -

Ask your dealer

- Is keyless entry standard or optional fit on your vehicle?
- Can the wireless signals on your fob be turned off overnight?
- Is a motion sensor fob available? This puts the key to sleep and deactivates it when it's not moving.

Rogue traders may quote low prices, but they will soon demand more money and very often the work they claim needs doing is completely unnecessary.

# News From Your Local Area

Remember, if something seems too good to be true, it probably is.

- Don't be pressured into agreeing to work being done. Many rogue traders will try to worry or pressure people into having work done. Even if there is an issue you have been meaning to fix don't be rushed into saying yes.
- Use reputable traders. If you do need work doing to your property, use a trader that is recommended or deemed trustworthy. Contact your local Trading Standards or Citizens Advice to find out if they have an approved trader list.
- Get at least 3 quotes. By getting 3 different quotes you will get a good idea of what is a fair price for the work and what is involved.
- Check before you let officials into your home. If someone says they are from a utilities company and there is a problem in the area, close the door and use the contact number you have from bills to call them and ask if they are working in the area.
- Many doorstep criminals will have fake ID which will have a contact number on, don't use this or trust that it is genuine.
- The simplest way to reduce the risk is not to engage with any doorstep sellers. You can politely say you don't deal with doorstep sellers.

Please share and look out for elderly and vulnerable neighbours as they are often targeted.

## Keep car keys safe

- When at home, keep your car key (and the spare) well away from the car and avoid leaving near your doors or windows.
- Put the keys in a screened tin/box/bag to disrupt the communication range. Test to check that it works.

## Use a signal-blocking pouch

- The pouch, such as a Faraday bag, is inexpensive and lined with layers of metallic materials.

## Use a steering wheel lock

- A steering wheel lock is an effective mechanical device that thieves' technology can't unlock.

## Re-programme your keys

- If you buy a second-hand vehicle, you may not have been given all of the keys. To be sure, get the keys re-programmed so previous owners can't access the vehicle.
- Contact an approved auto locksmith or your vehicle manufacturer.

# News From Your Local Area

Check if your vehicle has an immobiliser

- Find out by looking in the handbook or ask a mechanic to check. Fitting a Thatcham-approved immobiliser will make it harder to steal and can lower your insurance premium.

## Parking

- If you park on a driveway, park as close to the property as you can.
- If you have more than one vehicle on your driveway, park the less desirable vehicle in front of the more desirable one to block its access.

## Driveway bollards

- Fold down or removable driveway bollards are a simple and secure solution adding an extra layer of security.

## Security cameras

- A wide range of wired and wireless options are available to put you in control of your security.

Look at window/door alarms, these can also be good intruder alarms. If a potential intruder attempts to hit or smash the window, then a powerful siren is triggered.

These are just a few things to consider when looking at your home security, for more information about keeping your home and property safe visit [www.cheshire.police.uk/cp/crime-prevention/](http://www.cheshire.police.uk/cp/crime-prevention/)

Report any suspicious activity, such as being watched or followed, to the police through our website, on social media or by calling 101. Always 999 in an emergency.

## **MULTI-AGENCY WORK**

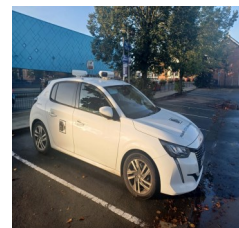
n/a

# News From Your Local Area

## **PARKING**

School parking patrol has been conducted this afternoon around ST BEDES PRIMARY SCHOOL WEAVERHAM with several motorists relocating their vehicles to safer locations, thank you!

ST BEDES PRIMARY SCHOOL are 100% committed to ensure safer roads for both children and local residents and are to address parking/children safety within their school newsletter, liaise with parents, local residents, and their beat team to achieve. WEAVER and CUDDINGTON beat team have linked in with CWAC highways to source a possible parking solution opposite junctions, churning up the grass verges. Further patrols will also be made to KEEPERS LANE and BEECH HEYES DRIVE.



## **TRUCAM**

Speed enforcement has been conducted on

STATION ROAD ACTON BRIDGE, CHESTER ROAD SANDIWAY, WALLERSCOTE ROAD, WEAVERHAM ROAD—all offences captured have been processed for our central ticket office to progress further.

## **CONTACT**

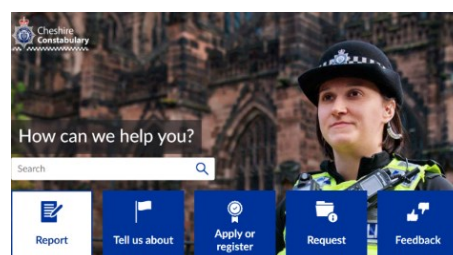
Please remember that sending social media message or ringing your beat officers on their work mobiles is not the correct format of reporting incidents. Our accounts/mobiles are not monitored 24/7.

If you need to get in touch with us? There are a number of ways you can contact us, find the best way that suits you to make your experience as quick and convenient as possible.

ring 999 in an emergency

ring 101 when it's less urgent than 999

cheshire.police.uk report non-urgent incidents online



# How to keep up to date with policing stories in your area..

**To stay up to date with local policing news in your area you can sign up or follow one or all of the below**

Keeping you informed on what's going on in your community

[Home Page - Cheshire Police Alert](#)



## **Home Watch**

If any members of Cheshire alert would like to set-up and become a coordinator of a watch scheme then we, as the police, will offer support and advice in any way we can. Crewe e-mail is attached at the top of this newsletter

Alternatively follow this link - <https://www.ourwatch.org.uk/>

## **Residents Voice**

**Have your say on policing in your area.....**

It is important to us that we know about the issues that cause you concern. We have set up a survey where you can tell us about the things you would like to focus on in your area.

If you can't scan the code you can go to

[Resident's voice | Cheshire Constabulary](#)

